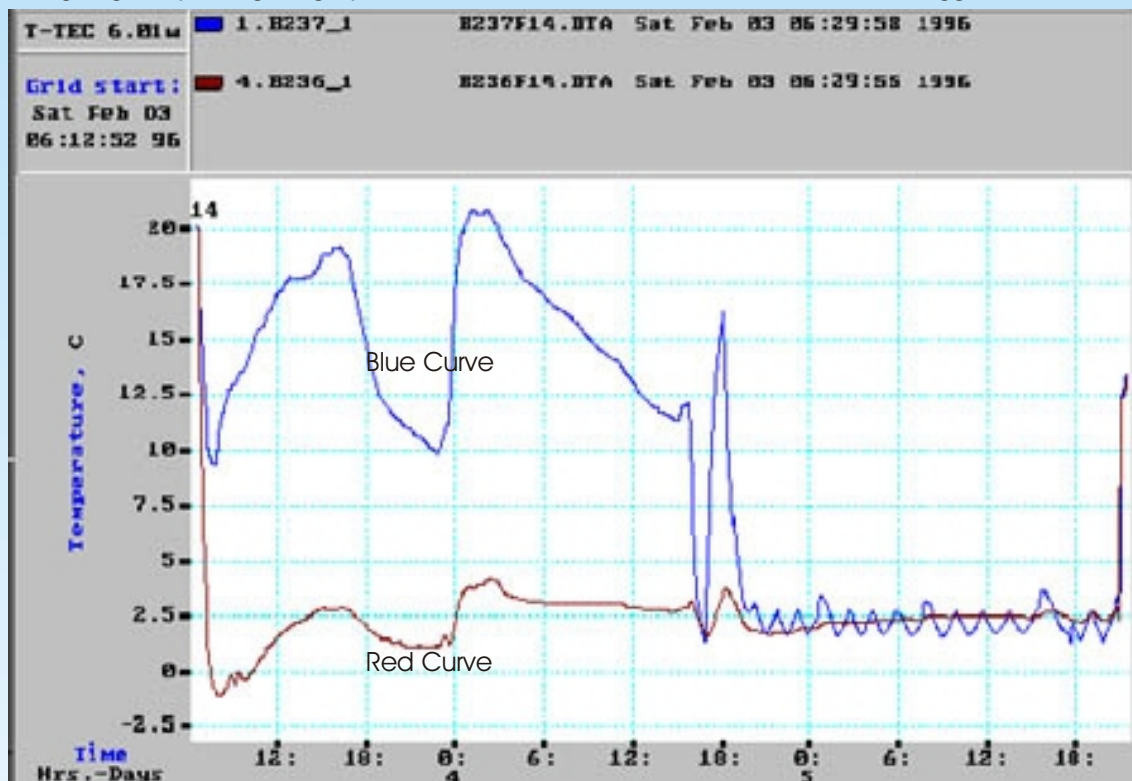


The T-TEC software program offers an outstanding range of features and facilities for operating the data loggers and for designing and printing the graphs. This software works well with all T-TEC Data loggers.



Example of a graph with 2 data loggers on a journey from Adelaide to Geneva with a shipment of fresh meat. The blue curve was a m b i e n t temperatures, the red curve was in the middle of the container.

## Communication with data logger

**Check logger** shows the status of the logger connected: ID number, battery status, whether logging or stopped, start time, logging intervals, number of readings currently in the memory, actual reading (whether stopped or logging). This does not interfere with continued logging.

**Start logger** window gives options of storing specific comments in the logger, choice of stop when memory is full or continue with wrap around, delay the start of the recording, choice of logging intervals between 1 second and 6 hours. A handy table indicates the logging period at different intervals and expected number of measurements. Alarms may be set individually as none, max or min with individual delay time for each. A common reset time may also be set. After the start, a click on Info reads back the downloaded settings from the logger and displays it on the computers screen.

**Print certificate** prints a hard copy for your file of the status of the logger.

## Temperature Technology

105 Anzac Highway  
Ashford SA 5035

Phone: 08-8297 7077

Fax: 08-8371 0558

Email: Sales@t-tec.com.au

## Graphics Program

**File** manages files easily. *Load File* gives access to all stored data files. Up to 8 curves may be loaded on the same graph. *Autoload first 8* converts and loads newly downloaded files. *Save to disk* or export to spread sheets. *Report Curve* limits the printout to that part of the file that is currently on the screen.

**View menu** has functions to change the time scale on the graph, to zoom in on areas of interest, to plot the graph to suit presentation, to create moving comments to the curves and add lines at important values.

**Print Menu** gives a choice of size of the printout of the graphs in colour as seen on the screen. List of time/temperature readings may also be printed out or exported to spreadsheet programs.

**Statistics** provides min, max and average values, as well as time above or below chosen limits. *Sine* and *Load Factor* reveal the effectiveness of a refrigeration plant. Other functions are calculating of *Chill Units* and *GDH* (Growing Degree Hours) and conversion from relative humidity to dewpoint for the temperature-humidity data logger.

