

## EMT 999 Electronic Min/ Max & Alarm Thermometer

**Min-Max & Alarm thermometer** may be used with or without remote sensor plugged in.  
Using the in-built sensor, the EMT 999 monitors ambient temperatures.  
Using the remote sensor, all the readings will be from the remote.

### High and low alarms may be set.

If an alarm is current, the thermometer will beep and flash a red light.  
Pressing any button will silence the beep. Alarm may be stopped manually.  
Pressing EVENT button will show the time when the alarm started.

### Large display can toggle between:

1. Actual, minimum and maximum temperatures since last reset.
2. Actual temperature, minimum and maximum alarm settings
3. Year, month, date and time.

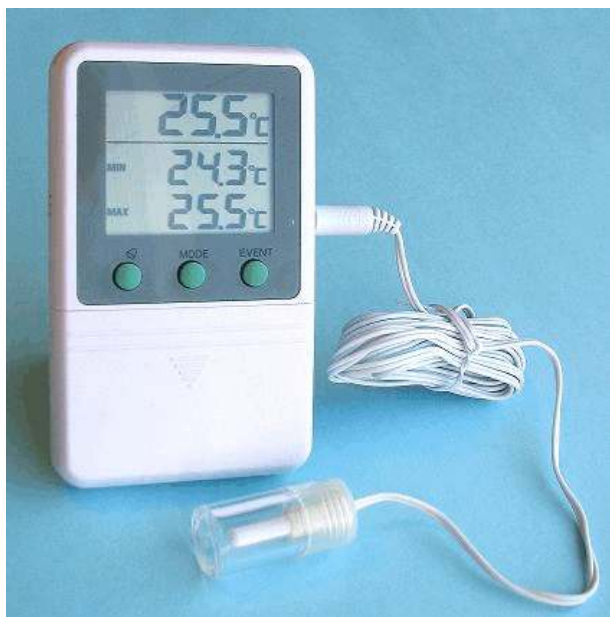
**Remote sensor with small bottle** (add glycol to avoid rapid temperature fluctuations)

### Features:

Large display, showing one decimal  
Accurate to +/- 0.3°C  
Hanging & standing feature  
Detachable remote sensor with bottle  
Flashing alarm light and beeper  
Shows time of an alarm event  
Low battery warning

### Example of use:

**Monitoring of Refrigerators  
Freezers  
Air Conditioning  
Vaccine  
Chemicals  
Food storage  
Incubators**



### Specifications:

In-built sensor range: -5 +50°C  
Remote sensor range: -50 +70°C  
Accuracy: 0 +40°C: ±0.3°C  
Time accuracy: ± 1 sec/day  
Battery: 1.5V AAA x 2  
Battery life: About 8000 hrs.  
Size: 75 x 124 x 19mm  
Weight: 115g  
Sensor: Thermistor, 3.2m cable with mini bottle  
Sensor bottle size: 19.5mmØ, 40mm high

### TEMPERATURE TECHNOLOGY

105 Anzac Highway,  
Ashford SA 5035,  
Tel: 08-8297 7077, Fax: 08-8371 0558  
[sales@t-tec.com.au](mailto:sales@t-tec.com.au) [t-tec.com.au](http://t-tec.com.au)